

Appendix IV: CCP Decision Tree

Appendix 4 - CCP Decision Tree

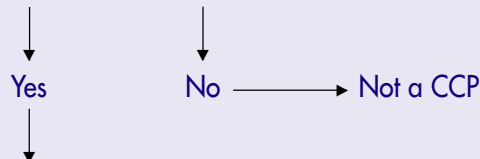
Notes:

Example of a CP Decision Tree

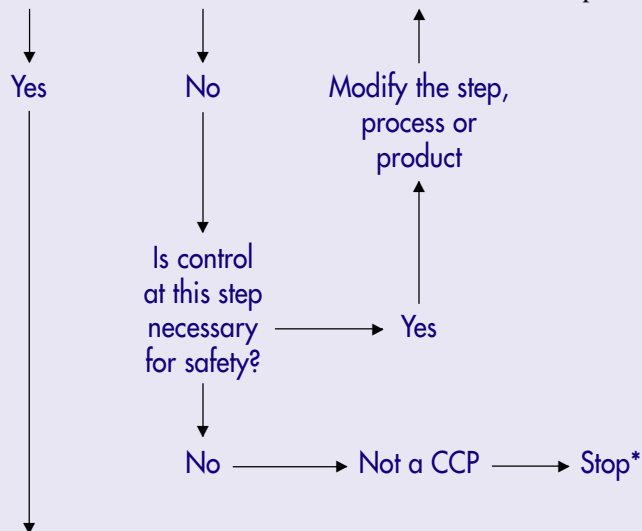
Important considerations when using the decision tree:

- The decision tree is used after the hazard analysis.
- The decision tree is used at the steps where a significant hazard has been identified.
- A subsequent step in the process may be more effective for controlling a hazard and may be the preferred CCP.
- More than one step in a process may be involved in controlling a hazard.
- More than one hazard may be controlled by a specific control measure.

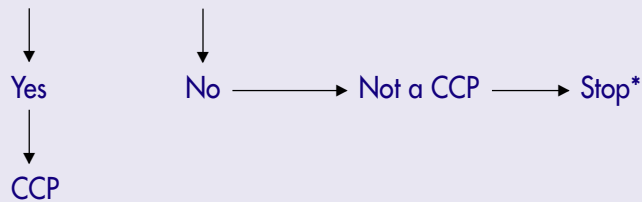
Q1. Does this step involve a hazard of sufficient risk and severity to warrant its control?



Q2. Does a control measure for the hazard exist at this step?



Q3. Is control at this step necessary to prevent, eliminate or reduce the risk of the hazard to consumers?



* Proceed to the next step in process.